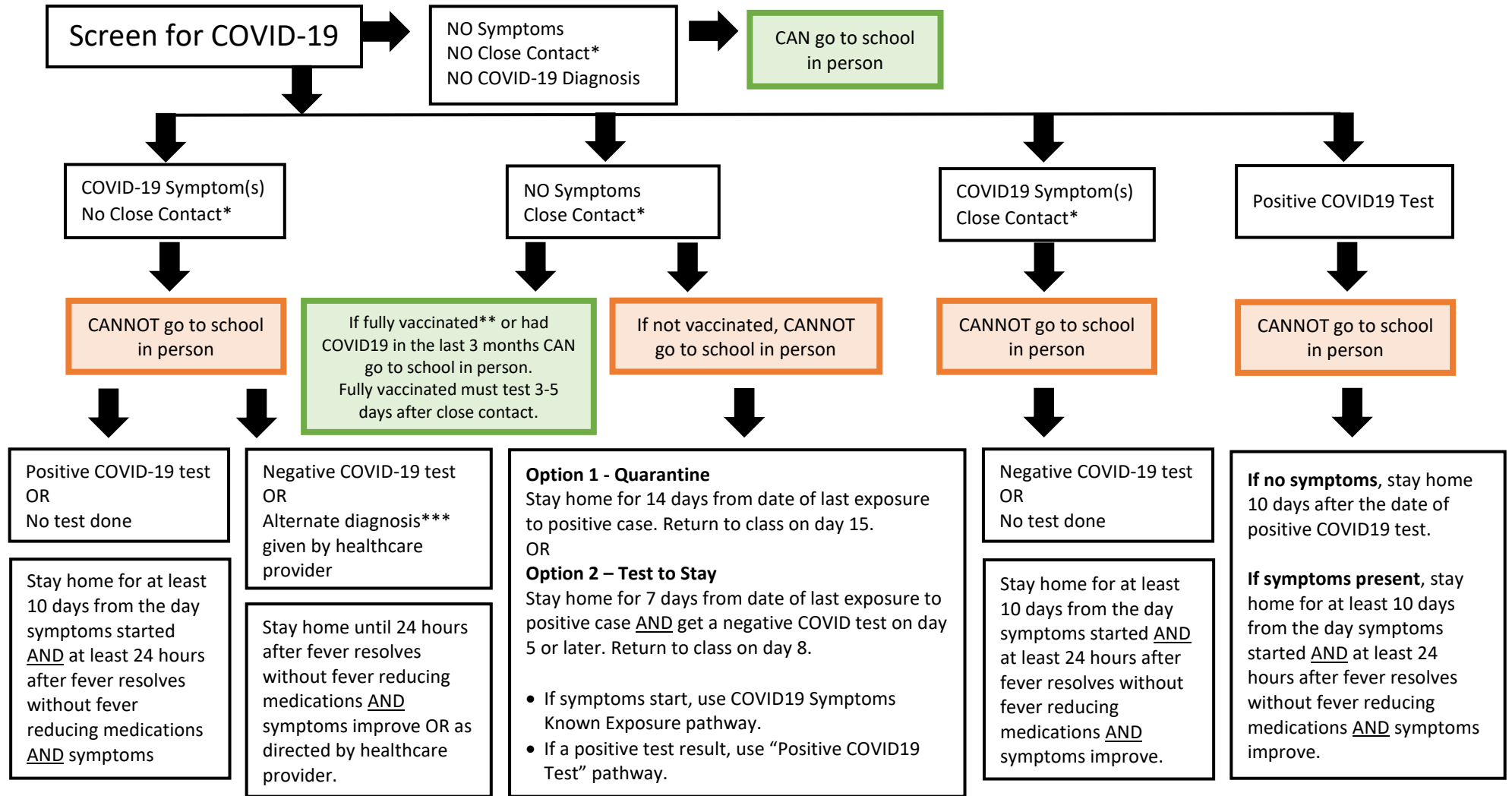


# COVID-19 Screening Flow Chart version 2



## COVID-19 Symptoms (any new or outside baseline)

- Fever 100.4 F or higher
- Chills
- Cough
- Shortness of breath / difficulty breathing
- New loss of taste or smell
- Fatigue
- Muscle or body aches
- Headache
- Sore throat
- Congestion or runny nose
- Nausea or vomiting
- Diarrhea

## \*Close Contact

Close Contact = less than 6 feet distance for a total of 15 minutes or more in a 24 hr period to a person with COVID-19.  
In K-12 indoor classroom, close contact excludes students who were at least 3 ft away from an infected student when (a) both students were wearing face coverings/masks and (b) other prevention strategies were in place.

## \*\*Fully Vaccinated

A person has had both doses of Pfizer or Moderna vaccine (or one dose of Johnson & Johnson vaccine) AND two weeks have passed since the last dose.

\*\*\*Examples of an **Alternative diagnosis** made by healthcare provider include childhood rash illness, strep throat, or non-COVID-19 viral illness.

If testing for other pathogens, strongly recommend testing for COVID-19 as well.